

INSTALLATION, USE AND MAINTENANCE HANDBOOK **FOR REI 60, REI 120, EI₂ 60, EI₂ 90, EI₂ 120 AND** **MULTIPURPOSE PROGET DOORS**

REI homologations:

BZ050REI060P004F1
 BZ050REI060P005F1
 BZ050REI060P012F2

BZ050REI060P013F2
 BZ050REI060P014F2
 BZ050REI060P016F2
 BZ050REI120P002F1
 BZ050REI120P006F1

BZ050REI120P007F1
 BZ050REI120P008F2
 BZ050REI120P010F2
 BZ050REI120P011F2
 BZ050REI120P015F2

EI₂ classifications:

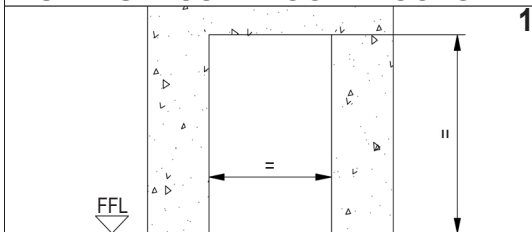
EI₂ 60: C-11-000095-PR04
 EI₂ 90: P.V. RS-12-077
 EI₂ 120: P.V. RS-06-092

NINZ S.p.A.
corso Trento, 2/A
I-38061 ALA (TN) / ITALY

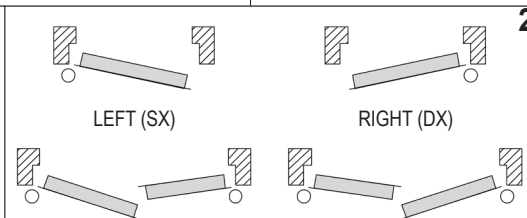
I52-GB

5001017/2
 06/13

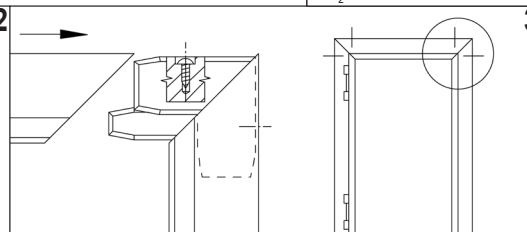
1/3



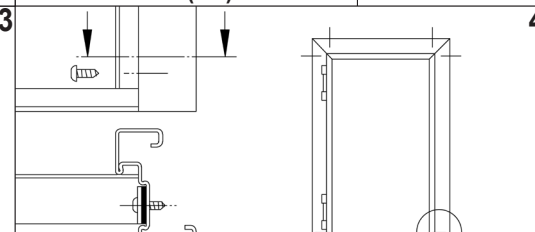
Unpack the doorframe and verify the correspondence between the wall opening and the dimension printed on the sticker applied on the frame. Establish the Finished Floor Level (FFL).



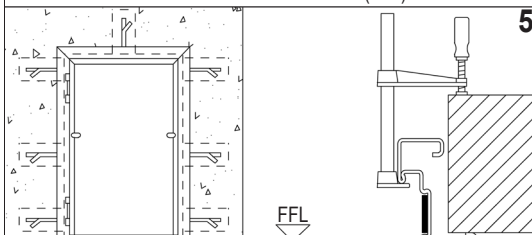
For door with environmental characteristics see also the enclosed complementary installation instructions.
 Verify the opening direction of the door.



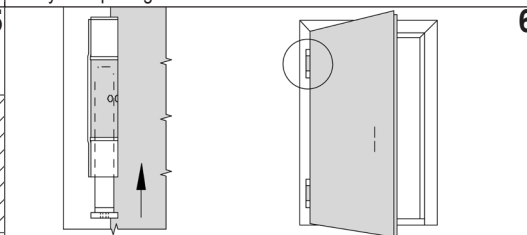
Set together the frame profiles with black joints, unfasten the screws present in the joints so that they enter the existing holes on frames until the connections get rigid.



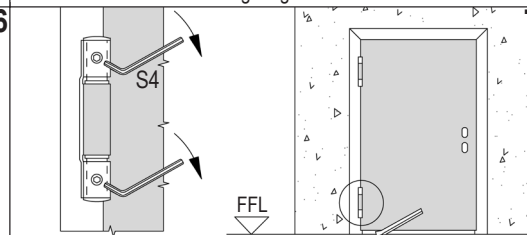
Unfasten the screws at the bottom part of the two jambs and fix them again inserting the lower spacer, without removing the self expanding gasket (to be present in fire-rated doors only).



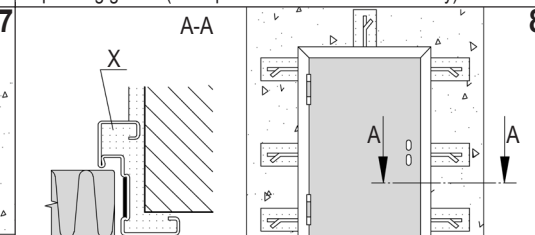
Bend up the frame-brackets and mark on the wall their positions respecting the FFL. Create the holes in the wall for the brackets. Insert the doorframe in the wall opening respecting the FFL and fasten it temporarily with clamps.



Unpack door leaf without removing spacers and wedges of PA. Place it in the doorframe inserting pivot with spring in upper hinge on left doors and in lower on right doors.

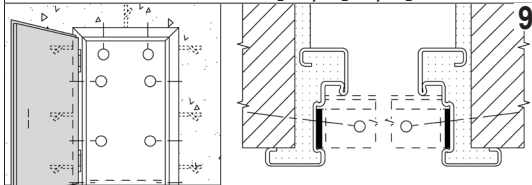


Close the door with the aid of a lever. Bring the main hinge bearings in contact with each other through the use of the screw thread. Operation to be carried out with the maximum care and without forcing. Verify the squareness of the whole door, respecting the FFL and the plumb line. Fix definitively the doorframe with the clamps.

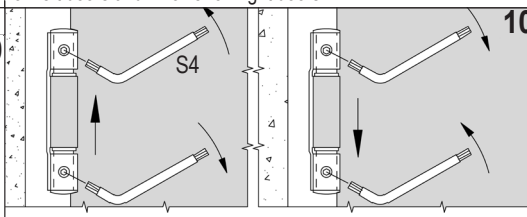


Fix the brackets with rapid setting cement. Fill up the space between frame and wall with mortar (detail X) without curving frame.

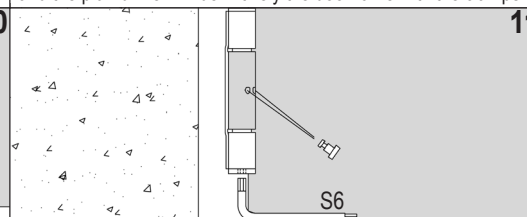
ADDITIONAL FIXING FOR EI₂ 60, EI₂ 90, EI₂ 120 DOORS



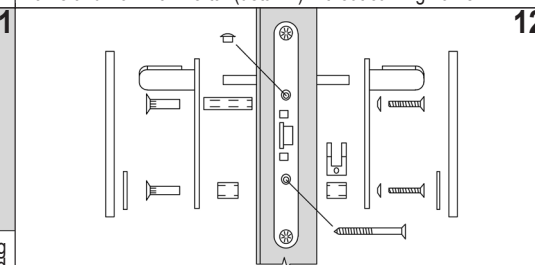
In case of EI₂ fire-rated door fasten additionally the doorframe, by drilling with a Ø6mm drill bit, at an intermediate distance between the frame-brackets in the (○) position and fix through all holes using MRS-H Ø7x120mm type wall screws. Remove the lower spacer and use the holes below for a further fixing of the jambs.



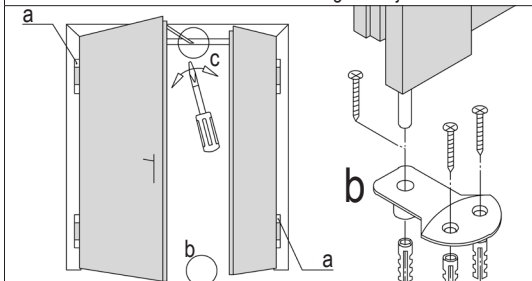
Remove the spacers between frame and leaf and the lower spacer. Regulate the vertical leaf's position. To raise the door leaf: unscrew the upper blocking screw, screw on the lower one, screw on the upper one again. To lower the door leaf: unscrew the lower blocking screw, screw on the upper one. Operation to be carried out with the maximum care with the aid of a lever.



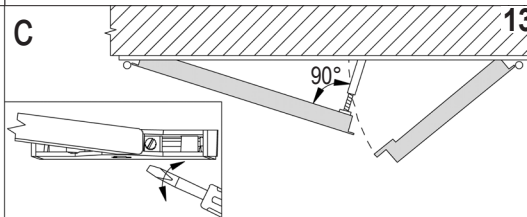
Wind up the spring hinge in the opening direction inserting the tension pin. Even if self closing is not needed or overhead doorclosers are installed, wind up the hinge spring anyway blocking it with the tension pin. The self closing it is mandatory for fire-rated doors.



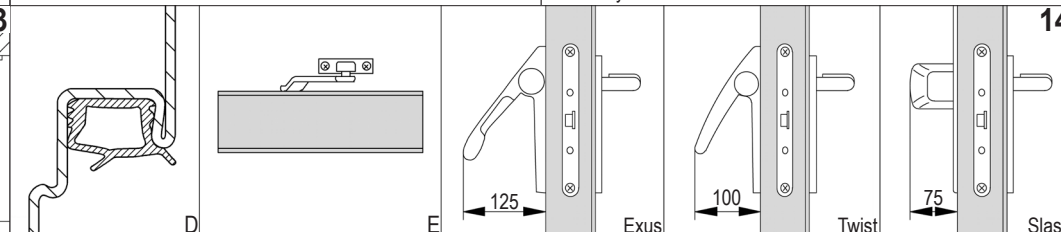
Mount the handle. Remove the sticker from the doorframe by means of hot air, or clean any remains using the product "Ecosolvente A/955" by "Recoll".



RC/STD (part. "c") obligatory only for fire-rated doors;
 RC2 obligatory for fire-rated doors with environmental characteristics.



For two-leaved doors use the same assemble procedure adding:
 a) load two pivot with springs; b) install the catch set in the floor;
 c) in case of RC/STD adjust the closing regulator (arm position perpendicular to the main leaf).



Optional: D) rebate sealing - E) overhead doorcloser (the spring must be anyhow slightly loaded) - Exus, Twist or Slash panic bar.